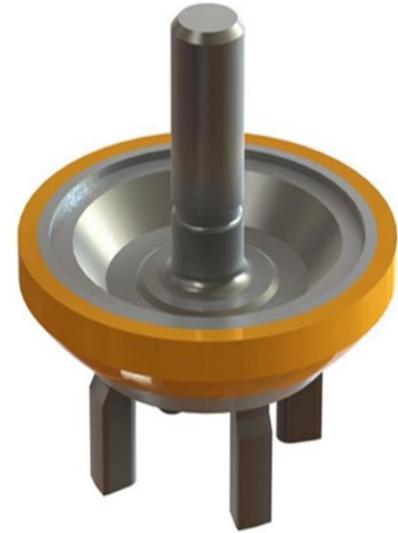




Bonded Valve

Premium Rig Parts introduces a new and improved full open valve with bonded insert. The bonded valve has replaced the slip-on insert to provide a tighter fit. This design is permanently bonded to the valve body. This reduces the tendency for fluids to penetrate between the polyurethane insert and the valve body; preventing failure. This bonded polyurethane insert is also used to minimize shock when the valve closes. The full open de-sign of this bonded valve provides maximum fluid flow, and has a longer operation life due to its increased structural strength. This is the result of using a forged solid body instead of a two piece design. This is done to provide durability at high pressures. The large metal-bearing area on the valve seat surface promotes a longer service life.



Design benefits include:

- Very high tensile strength
- Improved Shock Absorption
- Enhanced Sealing Capabilities
- Premature sealing failure prevention

Size	Valve	API Seat	API (MOD) Seat
API 6	773-1B	873-2	873-1
API 7	777-8B	877-7	877-8
API 8	-	881-8	881-1

Temperature	Max. Pressure	Hours of Operation
Up to 180°F (82°C)	7500 P.S.I.	400 – 600 hrs.

Disclaimer: Premium rig parts is not an authorized agent, sales representative or repair facility for all the manufactures listed above. Manufactures names are registered trademarks of their respective companies.

“At PREMIUM , we care about the products we supply.”

E-mail: sales@premiumrigparts.com www.premiumrigparts.com Tel:0086-15376875239



Cross Arms Valve, Seat & Spring

The Cross Arms Valve is a 4-Web Center Guided Valve System. This Valve has a replaceable Insert that is retained by a screw on plate with hammer lugs. Available in heavy duty standard temperature and high temperature versions. Oxide coated to fight corrosion while in storage. Available with standard API seats and “modified” API seats.

Design Benefits:

- Large metal-to-metal seat bearing area, longer wear life for metal wear areas
- 4-Web Seat Design Maximizes Bearing Area and makes Seat Pulling easier
- This stem guided valve and seat assembly weightless and provides a reasonable value at an economical price.

Operating Temperature:

- Standard Insert – Temperature Up to 160°F (71°C)
- High temperature (HC) Insert - 200°F (93°C)



Size	Valve	High Temp. Valve	API Seat	API (MOD) Seat	SPRING
API 6	U5B-EH	U5B-EHHT	6ADD-B6	6ADD-B4	5710-115
API 7	U5C-EEF	U5C-EEFHT	7DD-B1	7DD-B12	5710-115
API 8	U5B-23	U5B-23HT	8DD-B2	8DD-B7	5710-32

Disclaimer: Premium rig parts is not an authorized agent, sales representative or repair facility for all the manufactures listed above. Manufactures names are registered trademarks of their respective companies.

“At PREMIUM , we care about the products we supply.”



Double Angle-Valve, Seat & Spring

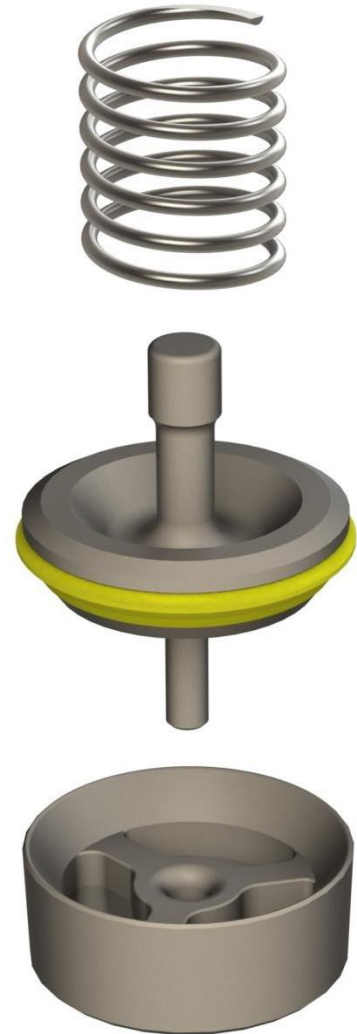
The Double Angle Valve is a 3-Web Center Guided Valve System. This Valve has a replaceable “Snap-In” Insert, available in standard temperature and high temperature versions. Oxide coated to fight corrosion while in storage. Available with standard API seat and “modified” API seats.

Design Benefits Include:

- Large metal-to-metal seat bearing area, longer wear life for metal wear areas.
- 3-web seat design maximizes bearing area and makes seat pulling easier.
- Lightweight design for stable operation at high pump speeds.

Operating Temperatures:

- Standard Insert – Temperature Up to 160°F (71°C)
- High temperature (HC) Insert - 200°F (93°C)



Size	Valve	High Temp. Valve	API Seat	API (MOD) Seat	SPRING
API 6	0500119	0520586	0504818	0512436	0513744
API 7	0500110	0520502	0509309	0514299	0513744
API 8	0500120	050012022	0504844	0504845	0520503

Disclaimer: Premium rig parts is not an authorized agent, sales representative or repair facility for all the manufactures listed above. Manufactures names are registered trademarks of their respective companies.

“At PREMIUM , we care about the products we supply.”



Heavy Duty Valve and Seat

Made Strong To Last Long

The Heavy Duty Valve is a bonded urethane valve that will hold up to the most hostile drilling environment. The HD Valve will withstand High Pressure, High Temperature and High Solids. Superior Performance, Long Run Life, Excellent Abrasion Resistance and Sealing Surface coupled with the highest rated chemically resistant urethane make the HD Valve an excellent choice for any drilling application.

Features :

- Unique urethane bonding anchor
- Reliable with the highest quality control
- High Temperature Urethane
- Excellent extrusion and abrasion resistance
- The strongest urethane bond of any valve for increased service life and a stronger seal
- Excellent chemical resistance
- 7500+ psi rated
- 300°F rated urethane
- Carburized and heat treated



Disclaimer: Premium rig parts is not an authorized agent, sales representative or repair facility for all the manufactures listed above. Manufactures names are registered trademarks of their respective companies.

“At PREMIUM , we care about the products we supply.”



Mission Roughneck Valve

Roughneck Valves and Seats sets industry standards by meeting the demands of today's hostile drilling environments encountered by contractors worldwide. The Roughneck is based on an extreme pressure well service valve design. The one-piece, tapered leg guide allows greater flow area and reduced abrasion and fluid velocity. The one-piece forged valve body provides superior strength, longer run times, and reduced cost. The Roughneck is ideal for high solids while the Roughneck HP is ideal for low solids.

- Precision machined components for a close tolerance fit
- Heat treated forged alloy steel valve body and valve seat for extended service life
- Improves maintenance conditions in valve-over-valve fluid ends
- Uniform loading of the fluid end taper increases fluid end life
- Smooth flow increases valve life when pumping abrasive mud



- Up to 7500 psi
- Available in the standard or HP design
- Insert is available in various compounds designed to fit specific drilling conditions

Disclaimer: Premium rig parts is not an authorized agent, sales representative or repair facility for all the manufactures listed above. Manufactures names are registered trademarks of their respective companies.

“At PREMIUM , we care about the products we supply.”



The Service Master Drilling Valve is the most economical drilling valve has to offer. The Service Master Drilling Valve utilizes a full open style with a forged steel valve body and investment cast bottom guide.

- Full Open style Drilling Valve & Seat
- Forged Steel Valve Body
- Investment Cast Bottom Guide
- Will **NOT** Interchange with Roughneck Drilling Seats

Disclaimer: Premium rig parts is not an authorized agent, sales representative or repair facility for all the manufactures listed above. Manufactures names are registered trademarks of their respective companies.

“At PREMIUM , we care about the products we supply.”



Roughneck ND Valve

The ND (Roughneck Style) Valve is a full open type valve that is fully interchangeable with Roughneck valves and seats. The full open design of the seat promotes even loading of the seat deck in the fluid end module. This valve is available with a standard polyurethane insert or a high temperature insert (add “HC” to the end of the valve part number. Ex: ND-7V2HC)



Design benefits include:

- Two piece welded design is better for high pumping speeds.
- Balanced insert and seat area for better sealing & loading characteristics
- Standard Insert – Temperature Up to 160°F (71°C) with Max Pressure of 7500 PSI
- High Temp. (HC) Insert - Temperature 300°F (149°C) with Max Pressure of 7500 PSI

Size	Valve	High Temp. Valve	API Seat	API (MOD) Seat
API 6	ND-6V2	ND-6V2HC	ND-6S6	ND-6S4
API 7	ND-7V2	ND-7V2HC	ND-7S1	ND-7S12
API 8	ND-8V2	ND-8V2HC	ND-8S2	ND-8S7

Disclaimer: Premium rig parts is not an authorized agent, sales representative or repair facility for all the manufactures listed above. Manufactures names are registered trademarks of their respective companies.

“At PREMIUM , we care about the products we supply.”

E-mail: sales@premiumrigparts.com

Website: www.premiumrigparts.com Tel: 0086-15376875239

The **Supreme Valve and Seat** is designed to meet all the demanding drilling conditions in use today. The proven design allows its use in pump maximum pressures and strokes; in water, oil or synthetic based muds. The Supreme valve is available with a standard polyurethane insert or a White Lightning insert . Both the standard polyurethane insert and the White Lightning insert are highly resistant to tear, abrasion, extrusion and are compatible with most of the chemistry in the drilling industry today.

The design of the Supreme valve and seat offers maximum flow characteristics. The four-web design of the seat offers additional bearing area so the valve weight can be held to a minimum. The steep bevel angle of the seat allows quick flushing of solid matter and additional metal-to-metal strike area plus a generous sealing area.



- The Supreme valve with the standard polyurethane insert is designed for temperatures up to 180°F (82°C).
- The Supreme valve with the White Lightning insert is suitable for elevated temperatures to 200°F (93°C).
- Both are highly resistant to tear, abrasion, extrusion and are compatible with most of the chemistry in the drilling industry today.
- Valve body is equipped with a removable knock-on nut so that the insert can be changed if pressures are below 2500 psi.
- Four-web design of the seat

Disclaimer: Premium rig parts is not an authorized agent, sales representative or repair facility for all the manufactures listed above. Manufactures names are registered trademarks of their respective companies.

“At PREMIUM , we care about the products we supply.”